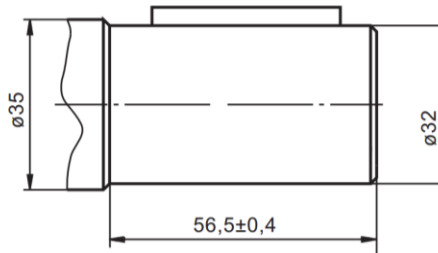
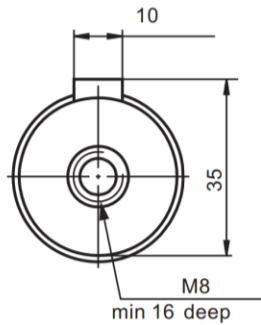
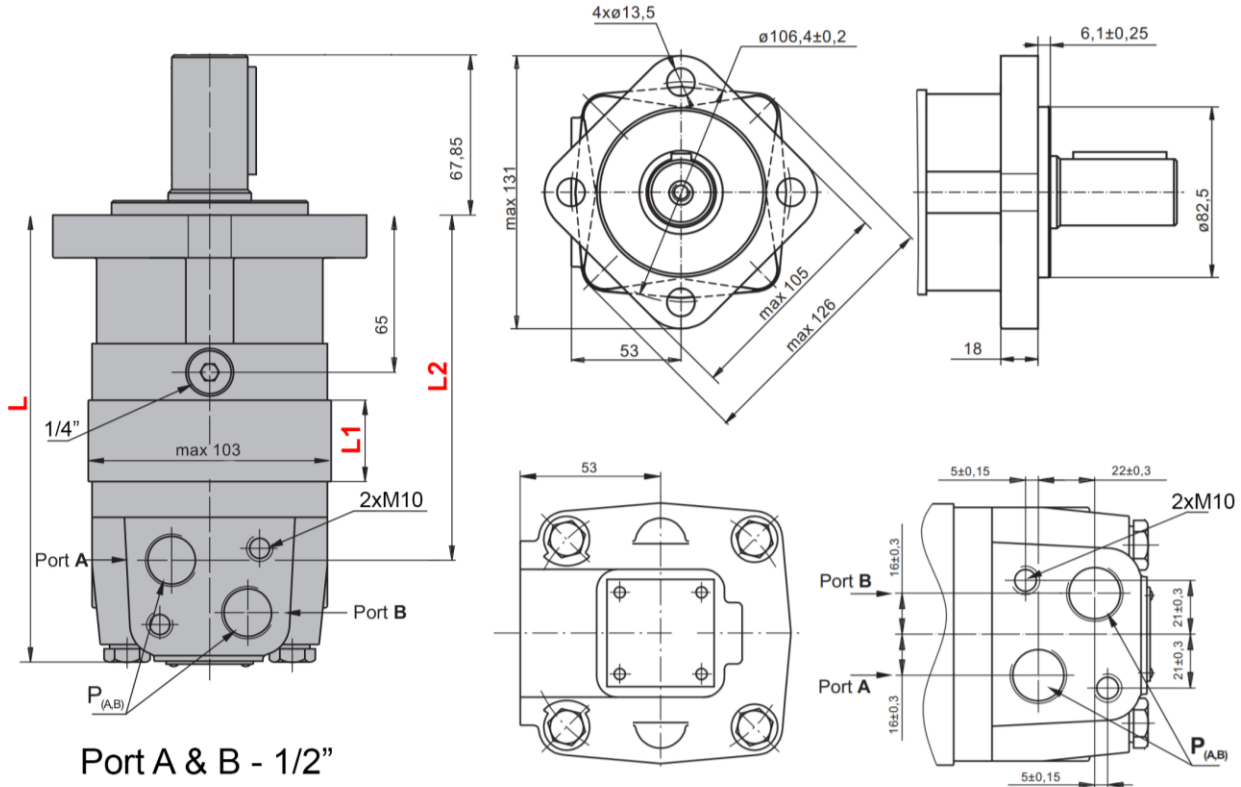


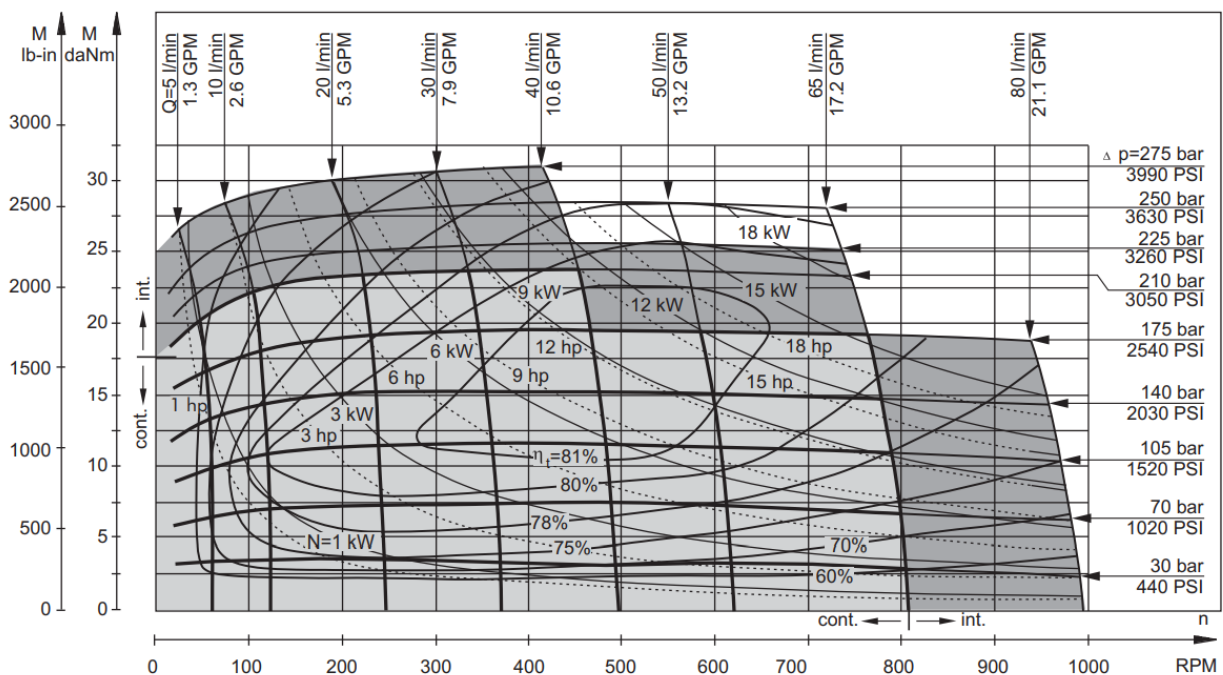
HIDROMOTORJI MS



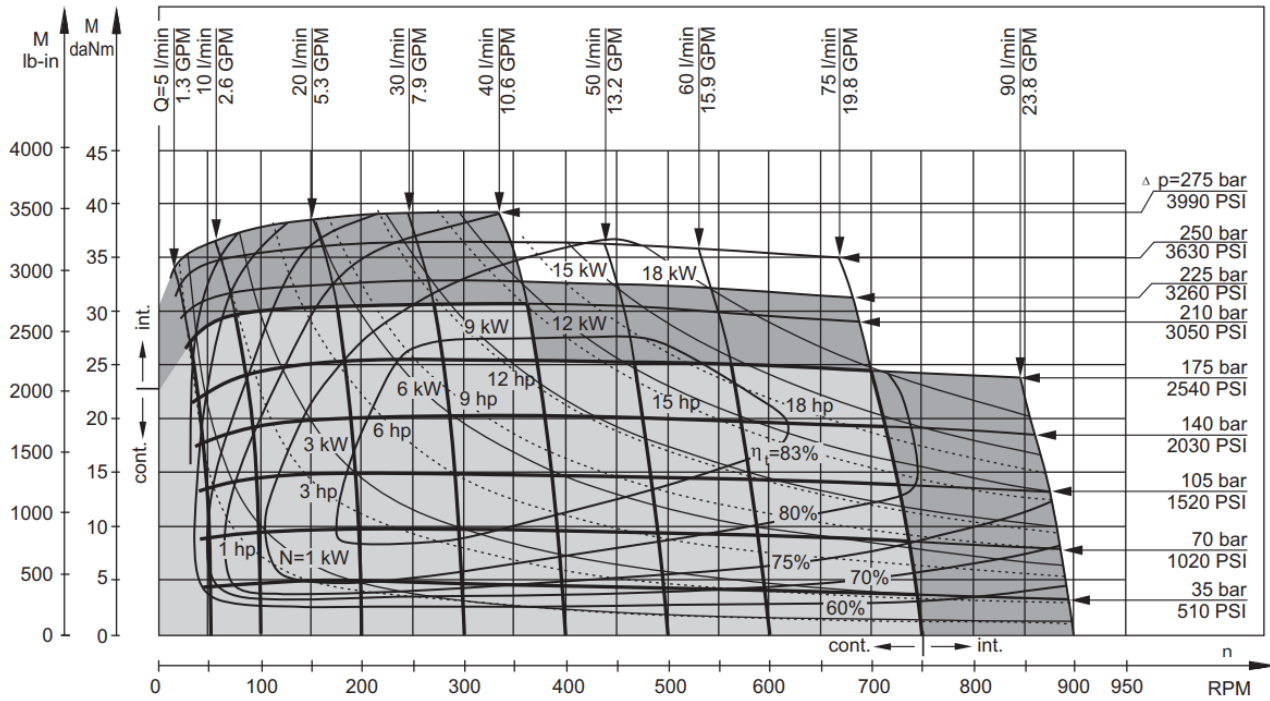
	L [mm]	L1 [mm]	L2 [mm]
MS 80	168	14	124
MS 100	171	17,4	128
MS 125	176	21,8	132
MS 160	182	27,8	138
MS 200	189	34,8	145
MS 250	197	43,5	154
MS 315	209	54,8	165
MS 400	223	69,4	179

		MS 80	MS 100	MS 125	MS 160	MS 200	MS 250	MS 315	MS 400
cm/vrtljaji		80,5	100	125,7	159,7	200	250	314,9	397
Vrtljaji [rpm]	konstantni	810	750	600	470	375	300	240	185
	s prekinitvami	1000	900	720	560	450	360	285	225
Navor [Nm]	konstantni	20	25	32	34	40	45	54	58
	s prekinitvami	24	30	38	48	50	54	63	69
	max.	26	32	40	51	65	69	84	85
Moč [kW]	konstantna	16	17,5	17,5	15,5	14	12,5	11,5	10
	s prekinitvami	19	21	21	21	17,5	15	13,5	13
Tlak [bar]	konstantni	175	175	175	175	140	125	120	100
	s prekinitvami	210	210	210	210	175	155	140	120
	max.	225	225	225	225	225	200	185	140
Pretok olja [L/min]	konstantni	65	75	75	75	75	75	75	75
	s prekinitvami	80	90	90	90	90	90	90	90
Priključni navoj		1/2"	1/2"	1/2"	1/2"	1/2"	1/2"	1/2"	1/2"
Teža [kg]		9,8	10	10,3	10,7	11,1	11,6	12,3	13,2

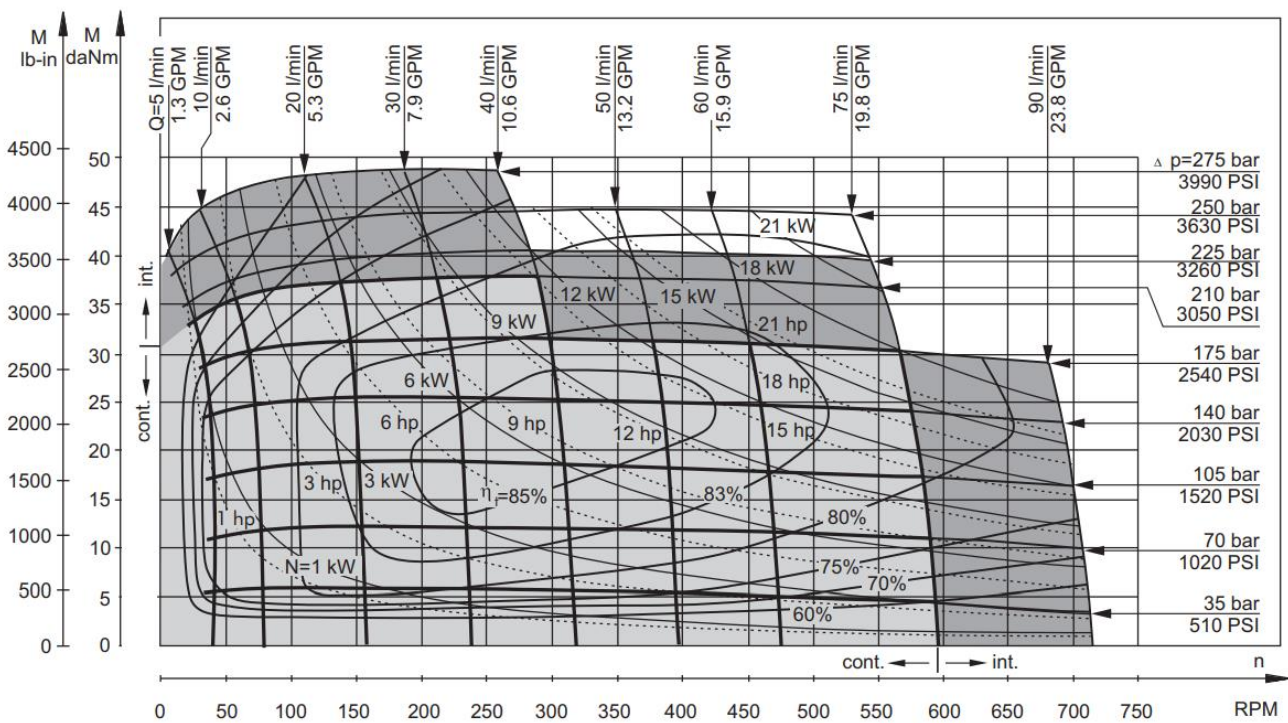
MS 80



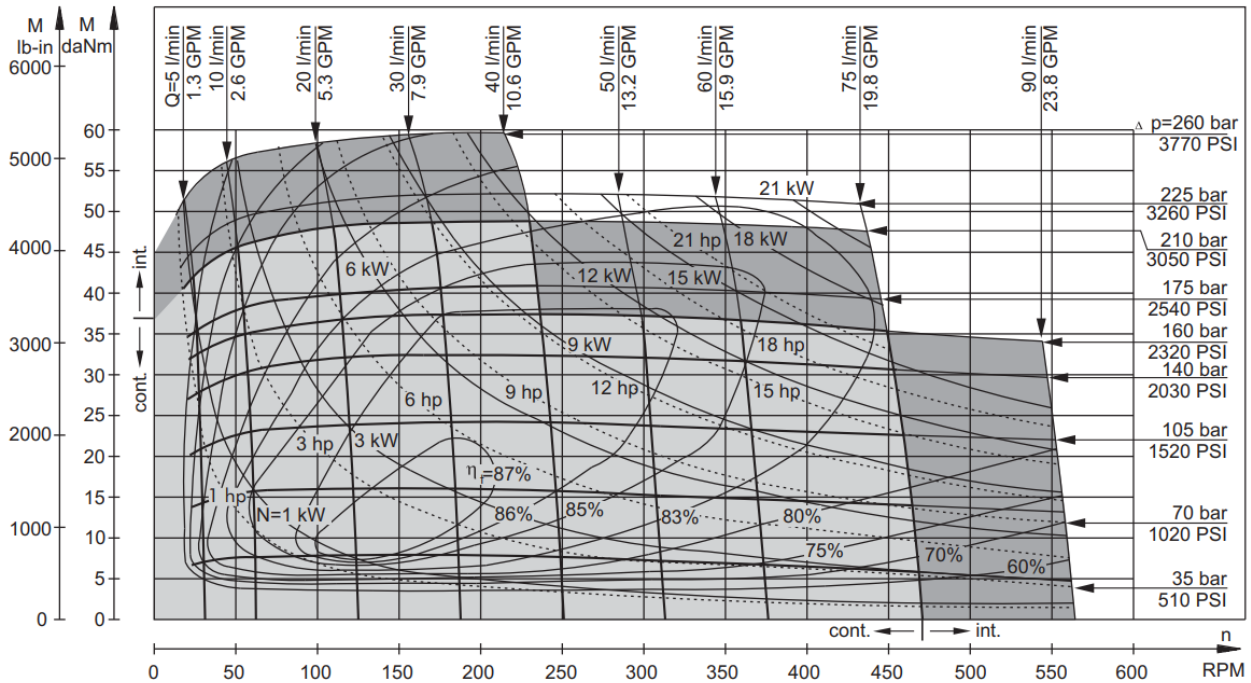
MS 100



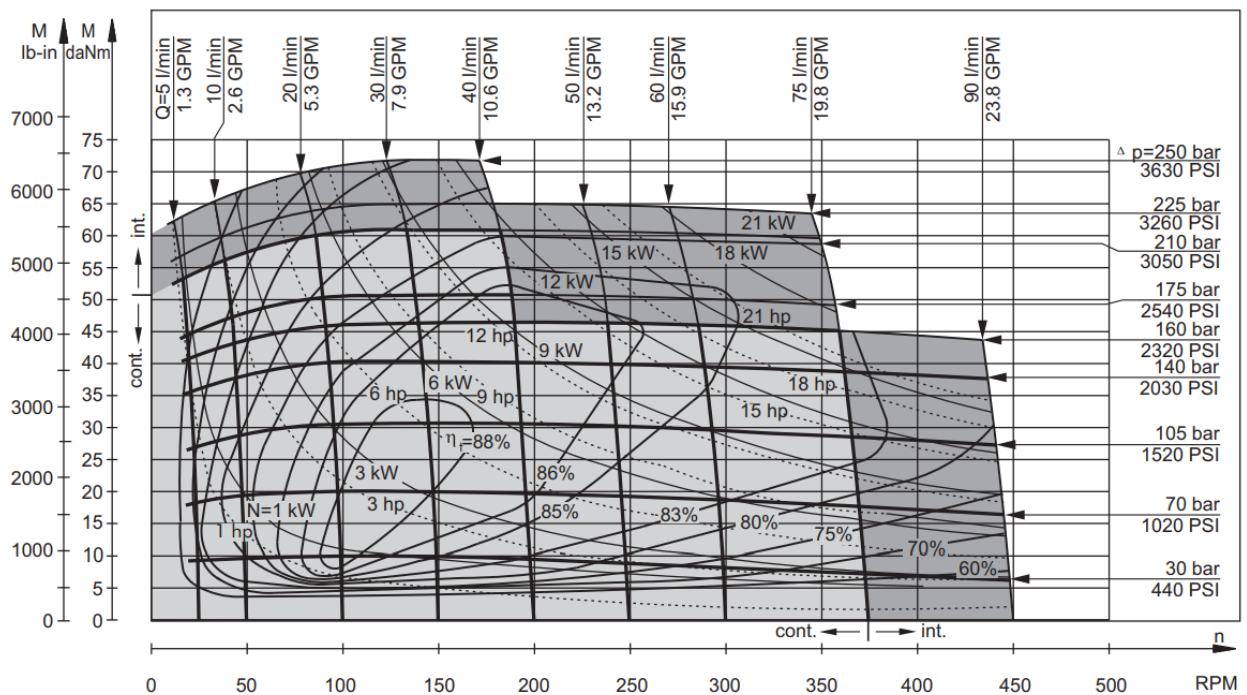
MS 125



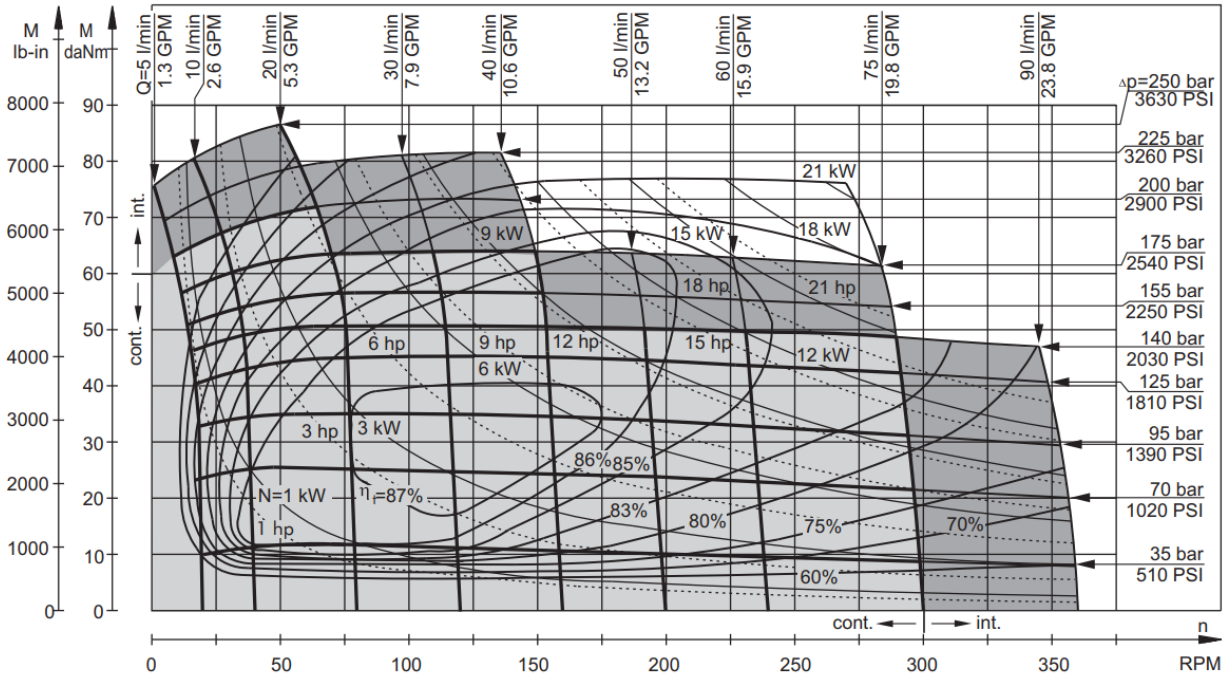
MS 160



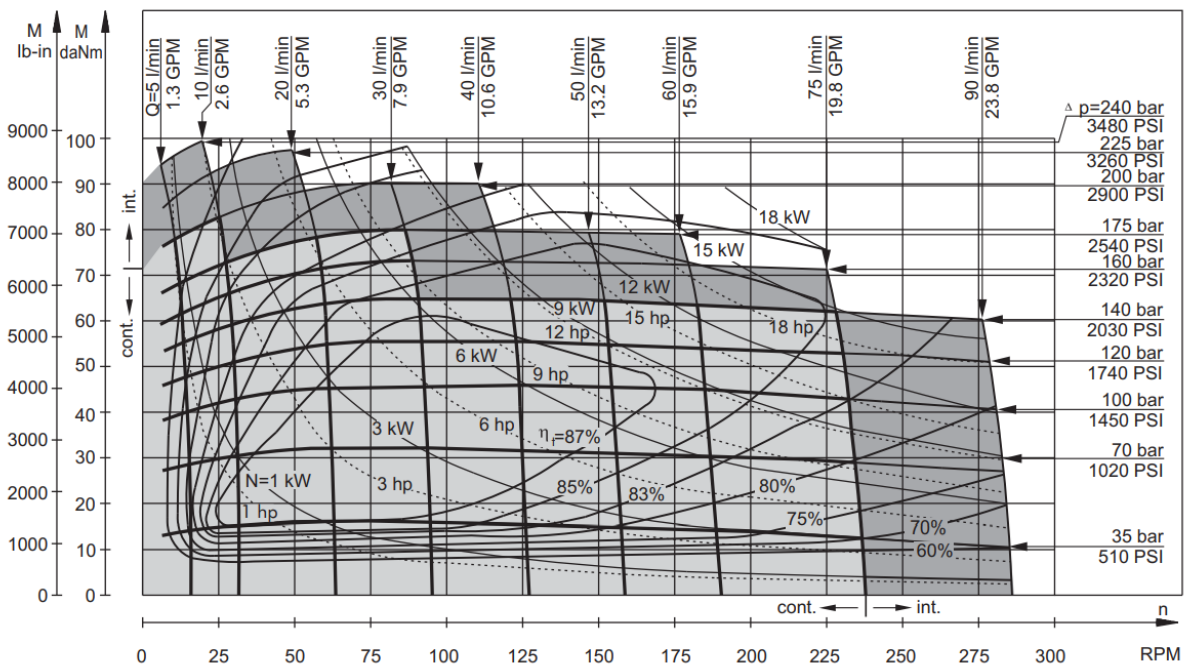
MS 200



MS 250



MS 315



MS 400

